

# HFKC (Twin Relays)

# AUTOMOTIVE RELAY



### Features

- Smallest twin relay
- Maximum switching current 30A
- Twin separate system

### Typical Applications

Rear window and seat heating control, Wiper control, Indicator control, Motor management, Power door & windows, Central door lock, Anti-theft lock, Lighting/flashlight & indicator lamp control

### CONTACT DATA

Contact Arrangement	2A, 2C	
Initial contact resistance	Max. 100mΩ	
Contact Material	AgSnO <sub>2</sub> , AgNi0.15,	
Max. continuous current	NO	30A (at 23°C), 20A (at 85°C)
	NC	25A (at 23°C), 15A (at 85°C)
Max. switching current	30A	
Mechanical life	5 x 10 <sup>6</sup> OPS	
Electrical life	3 x 10 <sup>5</sup> OPS (Resistive load: 20A 13.5VDC on NO-contact)	
	3x10 <sup>5</sup> OPS (Wiper reverse: 25A make current, 5A break current, generator peak-10A L=1.0mH)	
	1x10 <sup>5</sup> OPS (20A 13.5VDC, L=0.77mH)	

### COIL

Coil power	0.55 W 0.8 W (high power consumption type)
Coil resistance	See table below

### COIL DATA

Nominal Voltage VDC	Power consumption W	Pick-up Voltage VDC	Drop-out Voltage VDC	Coil Resistance Ω
6	0.55	3.5	0.8	63 ± 10%
12	0.55	6.9	1.5	254 ± 10%
12	0.80	6.9	1.5	181± 10%
10	0.55	5.7	1.25	181± 10%
24	0.55	13.8	3.0	1016 ± 10%

### CHARACTERISTICS

Initial Insulation Resistance	100MΩ (at 500VDC)
Dielectric Strength	Between coil and Contacts 500VAC 1min.
Operate time (at nomi. Vol.)	Typ. 4 ms
Release time (at nomi. Vol.)	Typ. 2 ms
Ambient temperature	-40°C to +105 °C
Shock resistance	Up to 30g - 6ms
Vibration resistance	6g from 10 to 500 HZ
Termination	PCB
Unit weight	Approx. 8g
Construction	Sealed IP67

Nominal Voltage VDC	Power consumption W	Pick-up Voltage VDC	Drop-out Voltage VDC	Max. allowable Voltage VDC	
				23 °C	105 °C
6	0.55	3.5	0.8	13.2	7.8
12	0.55	6.9	1.5	26	16
12	0.80	6.9	1.5	22	13
10	0.55	5.7	1.25	22	13
24	0.55	13.8	3.0	53	31



HONGFA RELAY  
ISO9001、ISO/TS16949、ISO14001 CERTIFIED

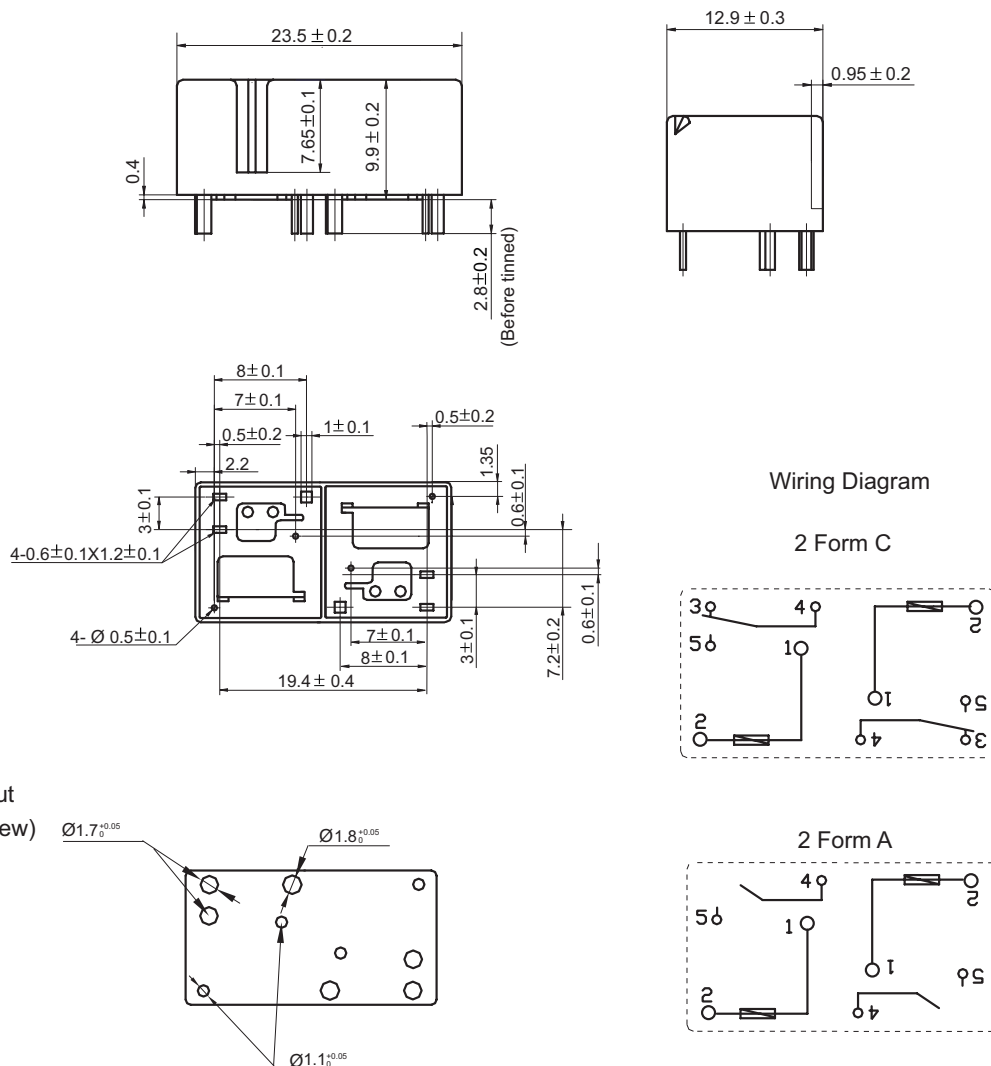
VERSION: EN02-20040601

## ORDERING INFORMATION

Type	HFKC / 012 2Z S P T XXX						
Coil voltage	6, 10, 12, 24VDC						
Contact arrangement	2Z: 2 x1C (separate) 2H: 2 x1A (separate)						
Structure	S: Sealed IP67						
Coil power	P: 0.8W Nil: 0.55W						
Contact Material	3: AgNi0.15 T: AgSnO <sub>2</sub>						
Customer special request code							

## OUTLINE DIMENSIONS, WIRING DIAGRAM AND PC BOARD LAYOUT

### Outline Dimensions



PCB Layout  
(Bottom View)

